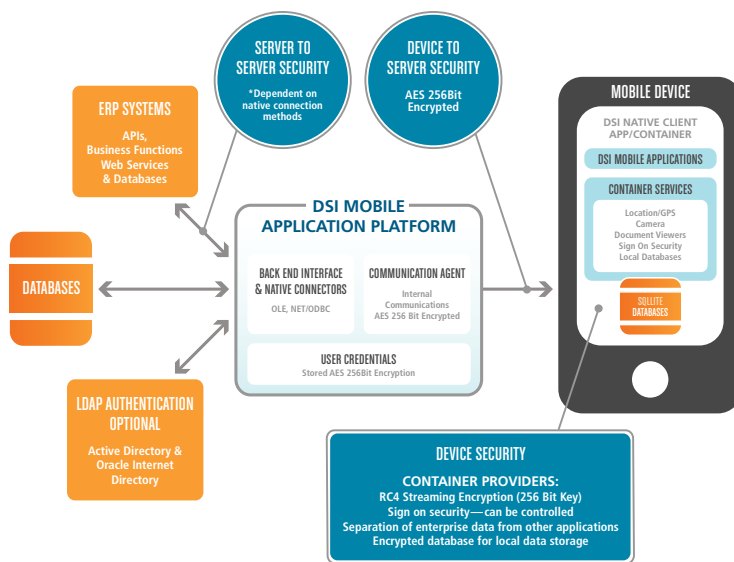


DSI Mobile Enterprise Platform: Security

Server Security

User Authentication and Management

The DSI Mobile Enterprise Platform has two internal user security methods for credential management — standard and advanced. Standard includes basic user and password management. Advanced allows the system administrator to put controls in place to manage expiration of passwords, force password complexity, set password reuse rules and configure when to lock out a device after failed authentication attempts.



The Platform also supports Microsoft Active Directory (AD) and Oracle Internet Directory (OID) LDAP standards. LDAP allows for centralized user management and single sign on. The communication between the MEP server and the LDAP server can be Secure Sockets Layer (SSL) secured for a higher level of credential protection.

DSI Mobile Enterprise Platform

- > Diverse mobile device deployment options
- > Integrations to leading enterprise applications and databases optimized for mobile deployment
- > On- and off-network functionality
- > Multi-language capability
- > Powerful application development tool

DSI Mobile Applications

- > Pre-built applications for sales, service, delivery, and approvals, as well as manufacturing, supply chain, and job management
- > Ready to deploy — decreased time to production and faster return on investment
- > Easily tailor to unique business requirements

DSI Mobile Technology

- > Deploy to smartphones, tablets, mobile computers, barcode and RFID scanners, and more
- > Integrate to equipment like scales and conveyors with machine-to-machine (M2M) technology
- > Support barcode, RFID, biometrics, and other data collection technologies
- > Choose from multiple deployment options: on-premise, hosted, or cloud
- > Cover the entire enterprise: on-premise or off-premise, connected or disconnected

Pre-Built Integrations

- > Oracle E-Business Suite
- > Oracle JD Edwards EnterpriseOne
- > Oracle JD Edwards World
- > SAP
- > Microsoft
- > Infor

freedom to succeed™

AMERICAS

Phone: +1 855.280.1176
info@dsiglobal.com

APAC

Phone: +65 6871.5330
software.ap@dsiglobal.com

EMEA

Phone: +44 118.9637.552
software.emea@dsiglobal.com

AUS

Phone: +613 9835.0600
software.ap@dsiglobal.com

Critical Information Storage

Critical or sensitive information contained on the Platform server, like user credentials (including names and passwords) and configuration information, are encrypted by AES 256Bit standards.

Client Security

User Authentication

DSI also provides logon management for the client for immediate authentication if in a network connected state. In addition, the credentials for the last user to sign on are cached locally in an encrypted file, so that if a user is disconnected they can still continue their work and access the Platform.

DSI Mobile Client (Container Application)

The DSI Mobile Client is a natively-built application container. DSI has native containers for iOS, Android, Windows Mobile and BlackBerry. This container application hosts all of the DSI business applications (field service, PO approval, etc.) that are intended for the mobile user. In addition, the container provides easy access to device accessories like cameras, barcode scanners, keyboards, GPS/location services and local database for offline use. Having enterprise applications within a device container provides additional layers of security. On Android & iOS devices, the container creates a "partition" of that prevents the user's personal applications from interacting with critical enterprise data.

Local Database

DSI provides a local client-side database for offline use. This database can be encrypted with RC4 streaming encryption, so if the device is lost or stolen and doesn't get wiped by a device management system, the data is still secure without the user password.

Communications Security

All DSI MEP device-to-server and server-to-device communications/transmissions can be encrypted by AES 256Bit standards.

freedom to succeed™

AMERICAS

Phone: +1 855.280.1176
info@dsiglobal.com

APAC

Phone: +65 6871.5330
software.ap@dsiglobal.com

EMEA

Phone: +44 118.9637.552
software.emea@dsiglobal.com

AUS

Phone: +613 9835.0600
software.ap@dsiglobal.com